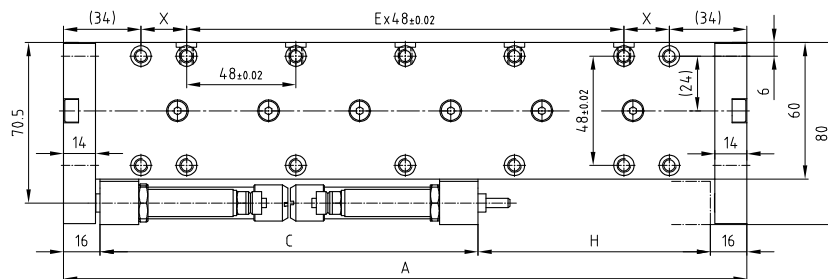
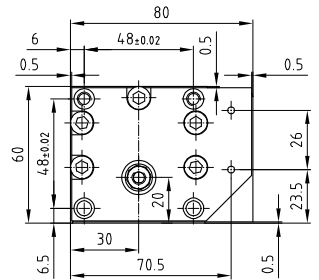
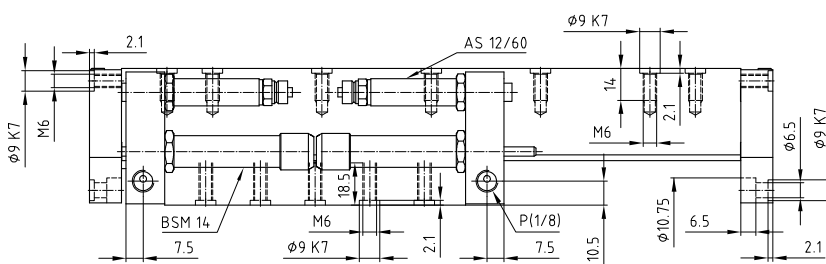
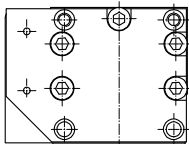
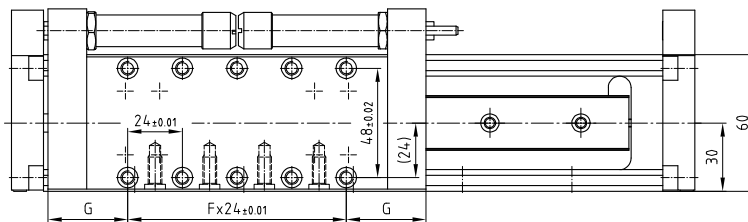
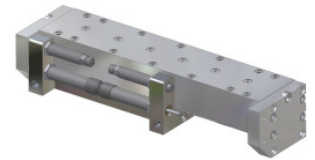
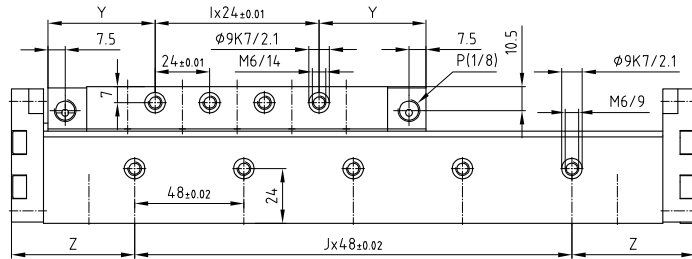
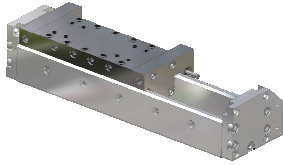


Linear-Element LES 25

Élément linéaire LES 25

Unità lineare LES 25

Linear element LES 25



P=Luftanschluss G 1/8

P=Raccord d'air G 1/8

P=Raccordi pneumatici G 1/8

P=Air connections G 1/8

Typ	Type	Tipo	Type	LES 25-100	LES 25-200	LES 25-300
Artikelnummer	No d'article	Codice No.	Reference No.	1000007	1000008	1000009
Nennhub H	Course H	Corsa H	Stroke H	100 mm	200 mm	300 mm
Mass A	Dimension A	Dimensione A	Dimension A	300 mm	500 mm	700 mm
Mass C	Dimension C	Dimensione C	Dimension C	166 mm	266 mm	366 mm
Mass Ex 48	Dimension E x 48	Dimensione E x 48	Dimension E x 48	4	7	12
Mass F x 24	Dimension F x 24	Dimensione F x 24	Dimension F x 24	4	8	12
Mass G	Dimension G	Dimensione G	Dimension G	35 mm	37 mm	39 mm
Mass I x 24	Dimension I x 24	Dimensione I x 24	Dimension I x 24	3	9	13
Mass J x 48	Dimension J x 48	Dimensione J x 48	Dimension J x 24	4	9	12
Mass X	Dimension X	Dimensione X	Dimension X	20 mm	48 mm	28 mm
Mass Y	Dimension Y	Dimensione Y	Dimension Y	47 mm	25 mm	27 mm
Mass Z	Dimension Z	Dimensione Z	Dimension Z	54 mm	34 mm	62 mm

Sonderausführungen auf Anfrage

Constructions particulières sur demande

Esecuzioni speciali su richiesta

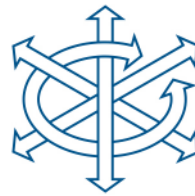
Special types on request

Zubehör finden Sie auf den Seiten 6.1

Vous trouvez des accessoires aux pages 6.1

Per gli accessori, vedi alle pagine 6.1

You will find accessories on pages 6.1



Technische Daten

Données techniques

Dati tecnici

Technical data

Typ	Type	Tipo	Type	LES 25-100	LES 25-200	LES 25-300
Artikelnummer	No d'article	Codice No.	Reference No.	1000007	1000008	1000009
Nennhub H	Course H	Corsa H	Stroke H	100 mm	200 mm	300 mm
Max. Nutzgewicht=m	Charge utile max.=m	Carico utile max.=m	Max. useful load=m	8 kg	8 kg	7 kg
Kolbenkraft einfahrend	Force du piston rentrant	Forza di rientro	Piston force retracted	195 N (5 bar)	195 N (5 bar)	195 N (5 bar)
Kolbenkraft ausfahrend	Force du piston sortant	Forza di uscita	Piston force extended	220 N (5 bar)	220 N (5 bar)	220 N (5 bar)
Betriebsdruck	Pression d'air	Pressione aria	Working pressure	3-8 bar	3-8 bar	3-8 bar
Luftanschlüsse (P)	Raccords d'air (P)	Raccordi pneumatici (P)	Air connectors (P)	G 1/8	G 1/8	G 1/8
Luftverbrauch/Hub	Consommation d'air/course	Consumo aria/corsa	Air consumption/stroke	0.27 NL	0.55 NL	0.82 NL
Temperaturbereich	Ecart de température	Gamma di temperatura	Temperature range	-10% +60 °C	-10% +60 °C	-10% +60 °C
Gewicht	Poids	Peso	Weight	2.60 kg	3.90 kg	5.20 kg
Wiederholgenauigkeit	Reproductibilité	Ripetibilità	Repeating accuracy	± 0.01 mm	± 0.01 mm	± 0.01 mm
Einbaulage (beliebig)	Position de montage (à volonté)	Posizione di montaggio (a volontà)	Any given position (any)			

Lieferumfang:

2 Anschlagsschr. AS 12/60
2 Stossdämpfer BSM 14
2 Positionierringe

Matériel livré:

2 Vis d'arrêt AS 12/60
2 Amortisseurs BSM 14
2 Bagues de positionnement

Ambito di fornitura:

2 Viti d'arresto AS 12/60
2 Ammortizzatori BSM 14
2 Anelli di posizionamento

Items supplied:

2 Stop screws AS 12/60
2 Shock absorbers BSM 14
2 Positioning rings

Taktzeit

Messungen bei 5 bar

m=Masse [kg]

t = Hubzeit [s]

Temps de cycle

Mesuré à 5 bar

m=Masse [kg]

t = Temps par course [s]

Tempo di ciclo

Misurato con 5 bar

m=Massa [kg]

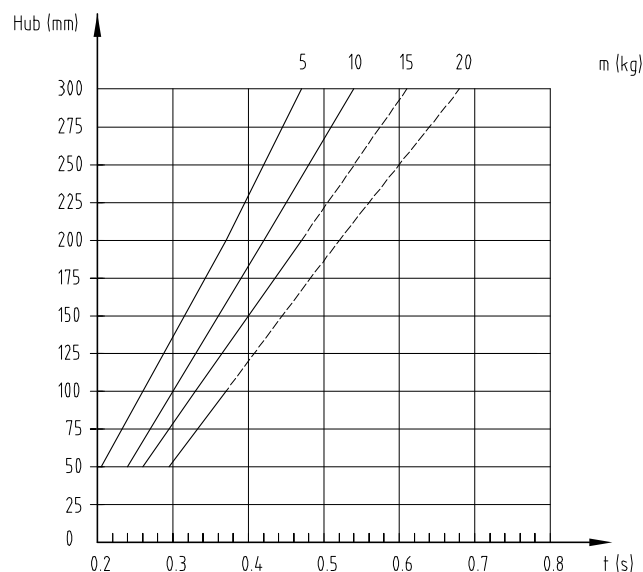
t = Tempo di corsa [s]

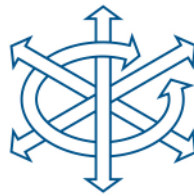
Cycle time

Measurements at 5 bar

m=Mass [kg]

t = Stroke time [s]



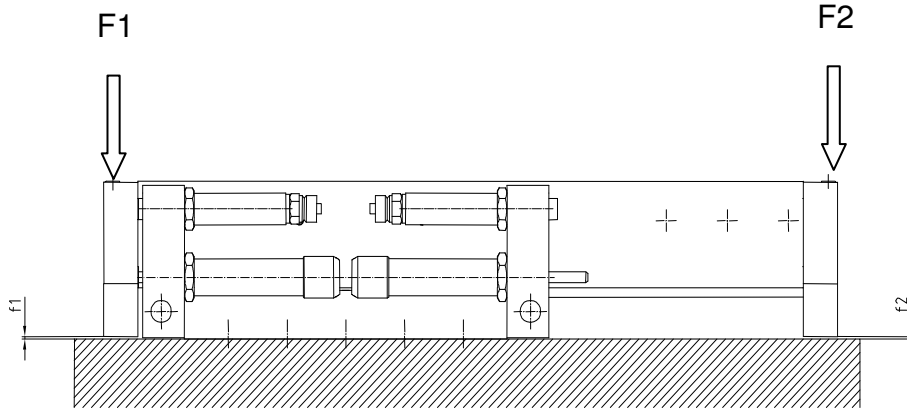


Durchbiegung

Fléchissement

Deflessione

Deflection



LES 25-100		
F1 / F2	f1	f2
10 N	0	0
20 N	0	0.005
30 N	0	0.010
40 N	0	0.013
50 N	0.005	0.020
60 N	0.010	0.030
70 N	0.010	0.035
80 N	0.015	0.040

LES 25-200	
f1	f2
0	0.010
0	0.030
0	0.050
0	0.060
0.005	0.080
0.010	0.090
0.010	0.095
0.015	0.100

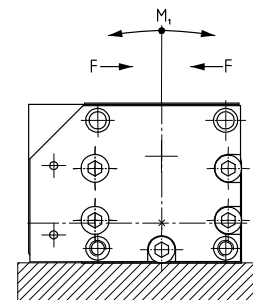
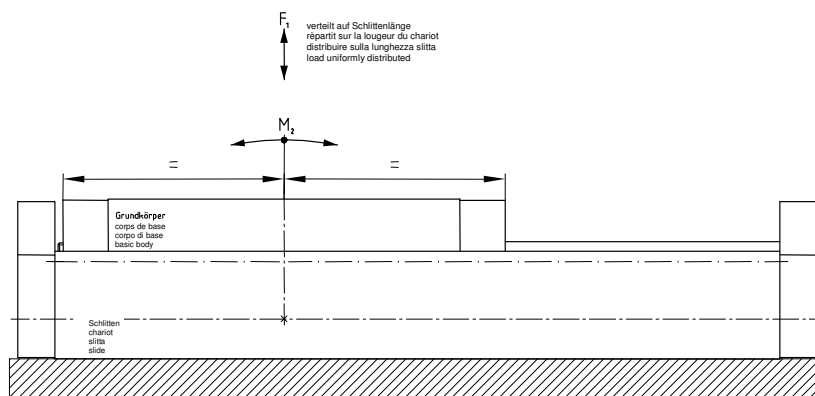
LES 25-300	
f1	f2
0	0.015
0	0.022
0	0.031
0	0.035
0.005	0.039
0.010	0.042
0.010	0.045

Moment

Moment

Momento

Moment



LES 25-100		
F1	M1	M2
4020 N	50 Nm	12 Nm

LES 25-200		
F1	M1	M2
4020 N	112 Nm	12 Nm

LES 25-300		
F1	M1	M2
4020 N	174 Nm	12 Nm