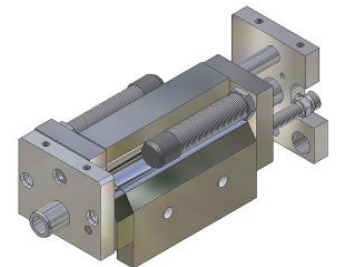
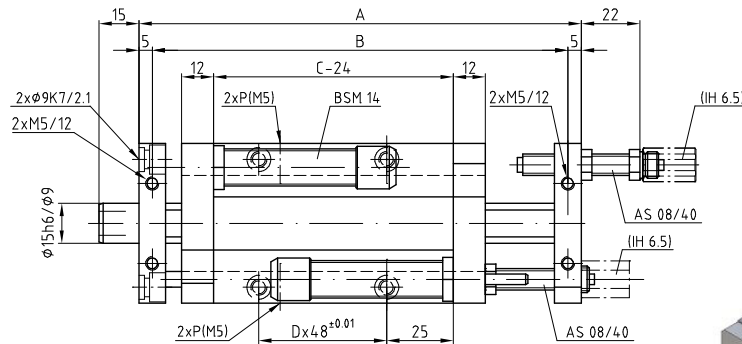
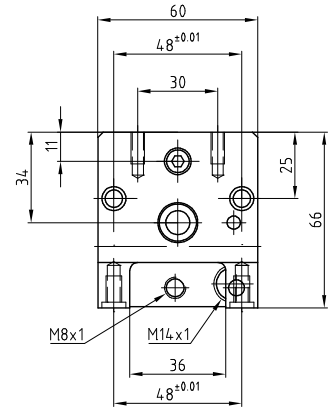
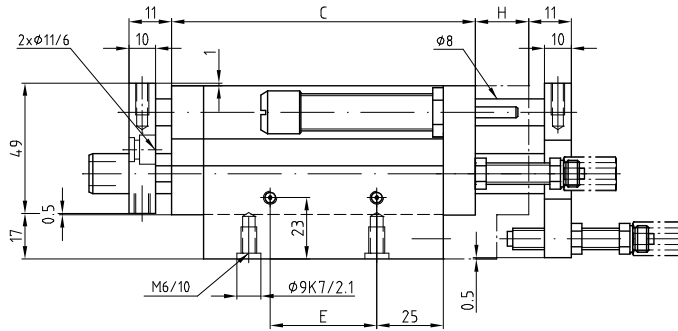
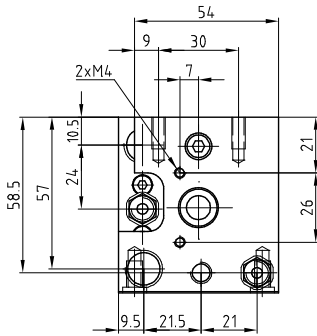


Vertikal-Element VE 25

Élément vertical VE 25

Unità verticale VE 25

Vertical element VE 25



P=Luftanschluss M5

P=Raccord d'air M5

P=Raccordi pneumatici M5

P=Air connections M5

Typ	Type	Tipo	Type	VE 25-30	VE 25-60	VE 25-100
Artikelnummer	No d'article	Codice No.	Reference No.	1000033	1000034	1000035
Nennhub H	Course H	Corsa H	Stroke H	30 mm	60 mm	100 mm
Mass A	Dimension A	Dimensione A	Dimension A	166 mm	226 mm	306 mm
Mass B	Dimension B	Dimensione B	Dimension B	156 mm	216 mm	296 mm
Mass C	Dimension C	Dimensione C	Dimension C	114 mm	144 mm	184 mm
Mass D	Dimension D	Dimensione D	Dimension D	1	1	2
Mass E	Dimension E	Dimensione E	Dimension E	40 mm	70 mm	110 mm

Sonderausführungen auf Anfrage

Constructions particulières sur demande

Esecuzioni speciali su richiesta

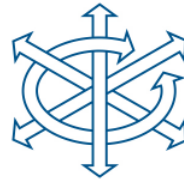
Special types on request

Zubehör finden Sie auf den Seiten 2.53, 5.1

Vous trouvez des accessoires aux pages 2.53, 5.1

Per gli accessori, vedi alle pagine 2.53, 5.1

You will find accessories on pages 2.53, 5.1



Technische Daten

Données techniques

Dati tecnici

Technical data

Typ	Type	Tipo	Type	VE 25-30	VE 25-60	VE 25-100
Artikelnummer	No d'article	Codice No.	Reference No.	1000033	1000034	1000035
Nennhub H	Course H	Corsa H	Stroke H	30 mm	60 mm	100 mm
Max. Nutzgewicht=m	Charge utile max. =m	Carico utile max. =m	Max. useful load=m	8 kg	7 kg	5 kg
Kolbenkraft einfahrend	Force du piston rentrant	Forza di rientro	Piston force retracted	140 N (5 bar)	140 N (5 bar)	140 N (5 bar)
Kolbenkraft ausfahrend	Force du piston sortant	Forza di uscita	Piston force extended	140 N (5 bar)	140 N (5 bar)	140 N (5 bar)
Betriebsdruck	Pression d'air	Pressione aria	Working pressure	3-8 bar	3-8 bar	3-8 bar
Luftanschlüsse (P)	Raccords d'air (P)	Raccordi pneumatici (P)	Air connectors (P)	M5	M5	M5
Luftverbrauch/H	Consommation d'air/ H	Consumo aria/ H	Air consumption/ H	0.05 NL	0.10 NL	0.16 NL
Temperaturbereich	Ecart de température	Gamma di temperatura	Temperature range	-10° + 60°C	-10° + 60°C	-10° + 60°C
Gewicht	Poids	Peso	Weight	1.6 kg	1.8 kg	2.05 kg
Wiederholgenauigkeit	Reproductibilité	Ripetibilità	Repeating accuracy	± 0.01 mm	± 0.01 mm	± 0.01 mm
Einbaulage (beliebig)	Position de montage (à volonté)	Posizione di montaggio (a volontà)	Any given position (any)			

Lieferumfang:	Matériel livré:	Ambito di fornitura:	Items supplied:
2 Anschlagschr. AS 08/40	2 Vis d'arrêt AS 08/40	2 Viti d'arresto AS 08/40	2 Stop screws AS 08/40
2 Stossdämpfer BSM 14	2 Amortisseurs BSM 14	2 Ammortizzatori BSM 14	2 Shock absorbers BSM 14
2 Positionerringe	2 Bagues de positionnement	2 Anelli di posizionamento	2 Positioning rings

Taktzeit

Messungen bei 5 bar

m=Masse [kg]

t = Hubzeit [s]

Temps de cycle

Mesuré à 5 bar

m=Masse [kg]

t = Temps par course [s]

Tempo di ciclo

Misurato con 5 bar

m=Massa [kg]

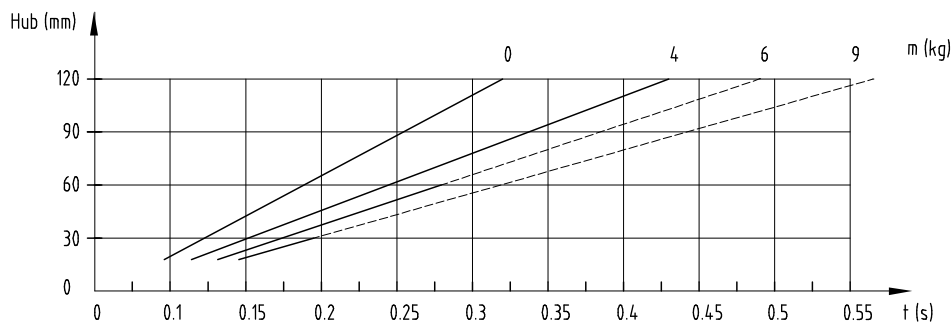
t = Tempo di corsa [s]

Cycle time

Measurements at 5 bar

m=Mass [kg]

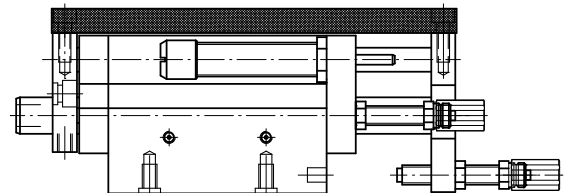
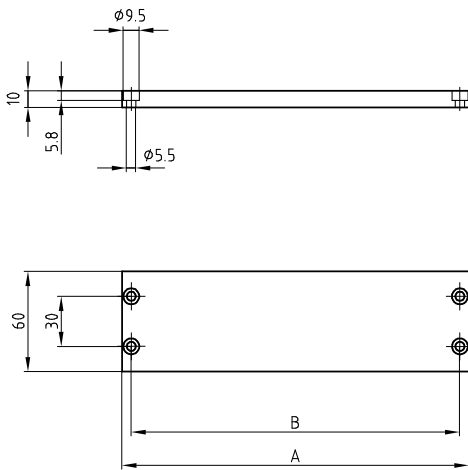
t = Stroke time [s]



Zubehör VE 25
Accessoires VE 25
Accessori VE 25
Accessory VE 25

Montageplatte	Plaque de montage	Piastra di montaggio	Connecting plate	VE 25-30	VE 25-60	VE 25-100
Artikelnummer	No d'article	Codice No.	Reference No.	4000031	4000032	4000033
Mass A	Dimension A	Dimensione A	Dimension A	167 mm	227 mm	307mm
Mass B	Dimension B	Dimensione B	Dimension B	156 mm	216 mm	296 mm
Gewicht	Poids	Peso	Weight	0.26 kg	0.36 kg	0.48 kg

Lieferumfang:	Matériel livré:	Ambito di fornitura:	Items supplied:
4 Schrauben M5x12	4 Vis M5x12	4 Viti M5x12	4 Screws M5x12


Zwischenanschlag
Plaque butée intermédiaire
Piastra di arresto intermedia
Intermediate stop
4000049

Lieferumfang:	Matériel livré:	Ambito di fornitura:	Items supplied:
2 Schrauben M5x16	2 Vis M5x16	2 Viti M5x16	2 Screws M5x16
2 U-Scheiben M5	2 Rondelles M5	2 Rosette M5	2 Plain washers M5

