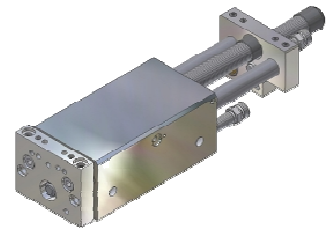
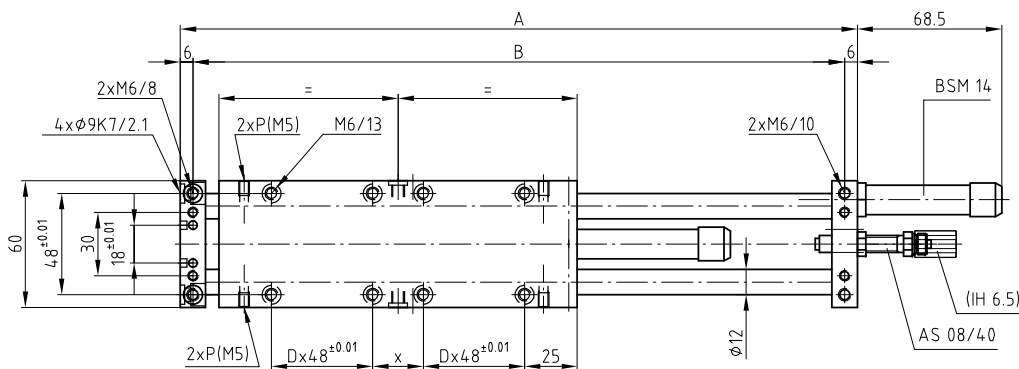
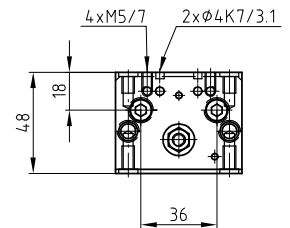
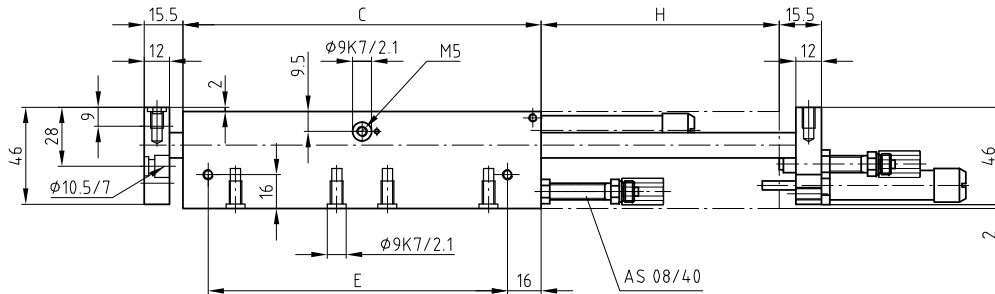


### Linear-Element LE 20

### Élément linéaire LE 20

### Unità lineare LE 20

### Linear element LE 20



P=Luftanschluss M5

P=Raccord d'air M5

P=Raccordi pneumatici M5

P=Air connections M5

Typ Tipo	Type Type	LE 20-30	LE 20-60	LE 20-90	LE 20-120	LE 20-150	LE 20-200
Artikelnummer	No d'article	1000017	1000018	1000019	1000020	1000021	1000022
Codice No.	Reference No.						
Nennhub H	Course H	30 mm	60 mm	90 mm	120 mm	150 mm	200 mm
Corsa H	Stroke H						
Mass A	Dimension A	141 mm	201 mm	261 mm	321 mm	381 mm	481 mm
Dimensione A	Dimension A						
Mass B	Dimension B	129 mm	189 mm	249 mm	309 mm	369 mm	469 mm
Dimensione B	Dimension B						
Mass C	Dimension C	80 mm	110 mm	140 mm	170 mm	200 mm	250 mm
Dimensione C	Dimension C						
Mass D	Dimension D	1	1	2	2	3	4
Dimensione D	Dimension D						
Mass E	Dimension E	50 mm	80 mm	109 mm	142 mm	172 mm	222 mm
Dimensione E	Dimension E						
Mass X	Dimension X	-	-	10 mm	24 mm	48 mm	2x48 mm
Dimensione X	Dimension X						

Sonderausführungen auf Anfrage

Constructions particulières sur demande

Esecuzioni speciali su richiesta

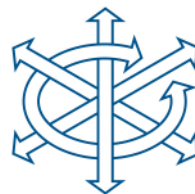
Special types on request

Zubehör finden Sie auf den  
Seiten 2.23, 6.1

Vous trouvez des accessoires  
aux pages 2.23, 6.1

Per gli accessori, vedi alle  
pagine 2.23, 6.1

You will find accessories on  
pages 2.23, 6.1



### Technische Daten

### Données techniques

### Dati tecnici

### Technical data

Typ Tipo	Type Type	LE 20-30	LE 20-60	LE 20-90	LE 20-120	LE 20-150	LE 20-200
Artikelnummer Codice No.	No d'article Reference No.	1000017	1000018	1000019	1000020	1000021	1000022
Nennhub H Corsa H	Course H Stroke H	30 mm	60 mm	90 mm	120 mm	150 mm	200 mm
Max. Nutzgewicht=m Carico utile max.=m	Charge utile max.=m Max. useful load=m	8 kg	8 kg	8 kg	8 kg	5.0 kg	3.0 kg
Kolbenkraft einfahrend Forza di rientro	Force du piston rentrant Piston force retracted	120 N (5 bar)	120 N (5 bar)	120 N (5 bar)	120 N (5 bar)	120 N (5 bar)	120 N (5 bar)
Kolbenkraft ausfahrend Forza di uscita	Force du piston sortant Piston force extended	141 N (5 bar)	141 N (5 bar)	141 N (5 bar)	141 N (5 bar)	141 N (5 bar)	141 N (5 bar)
Betriebsdruck Pressione aria	Pression d'air Working pressure	3 – 8 bar	3 – 8 bar	3 – 8 bar	3 – 8 bar	3 – 8 bar	3 – 8 bar
Luftanschlüsse (P) Raccordi pneumatici (P)	Raccords d'air (P) Air connectors (P)	M5	M5	M5	M5	M5	M5
Luftverbrauch/Hub Consumo aria/corsa	Consommation d'air/course Air consumption/stroke	0.05 NL	0.10 NL	0.15 NL	0.20 NL	0.25 NL	0.32 NL
Temperaturbereich Gamma di temperatura	Ecart de température Temperature range	-10% + 60°C	-10% + 60°C	-10% + 60°C	-10% + 60°C	-10% + 60°C	-10% + 60°C
Gewicht Peso	Poids Weight	1.31 kg	1.58 kg	1.85 kg	2.12 kg	2.39 kg	2.66 kg
Wiederholgenauigkeit Ripetibilità	Reproductibilité Repeating accuracy	±0.01 mm	±0.01 mm	±0.01 mm	±0.01 mm	±0.01 mm	±0.01 mm
Einbaulage (beliebig) Posizione di montaggio (a volontà)	Position de montage (à volonté) Any given position (any)						

Lieferumfang:	Matériel livré:	Ambito di fornitura:	Items supplied:
2 Anschlagsschr. AS 08/40	2 Vis d'arrêt AS 08/40	2 Viti d'arresto AS 08/40	2 Stop screws AS 08/40
2 Stossdämpfer BSM 14	2 Amortisseurs BSM 14	2 Ammortizzatori BSM 14	2 Shock absorbers BSM 14
2 Positionierringe	2 Bagues de positionnement	2 Anelli di posizionamento	2 Positioning rings

**Taktzeit**  
Messungen bei 5 bar

**Temps de cycle**  
Mesuré à 5 bar

**Tempo di ciclo**  
Misurato con 5 bar

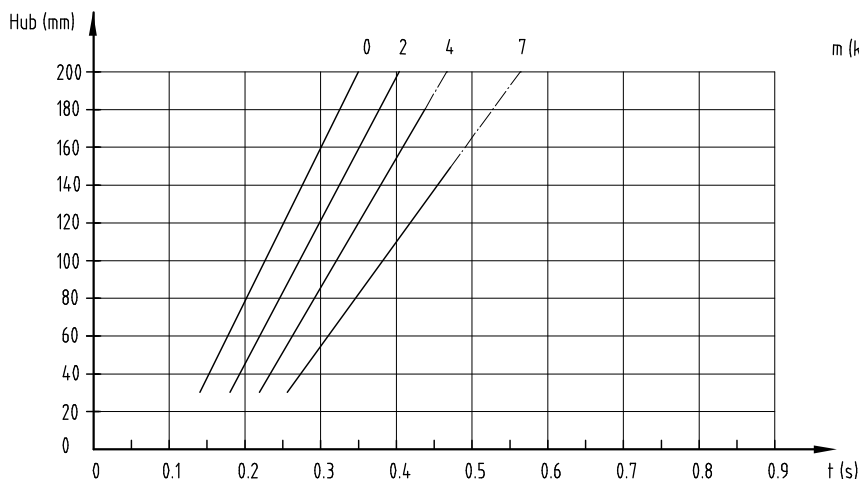
**Cycle time**  
Measurements at 5 bar

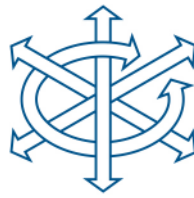
m=Masse [kg]  
t = Hubzeit [s]

m=Masse [kg]  
t = Temps par course [s]

m=Massa [kg]  
t = Tempo di corsa [s]

m=Mass [kg]  
t = Stroke time [s]





## Zubehör LE 20

## Accessoires LE 20

## Accessori LE 20

## Accessory LE 20

Montageplatte Piastra di montaggio	Plaque de montage Connecting plate	LE 20-30	LE 20-60	LE 20-90	LE 20-120	LE 20-150	LE 20-200
Artikelnummer Codice No.	No d'article Reference No.	4000018	4000019	4000020	4000021	4000022	4000023
Mass A Dimensione A	Dimension A Dimension A	141 mm	201 mm	261 mm	321 mm	381 mm	481 mm
Mass B Dimensione B	Dimension B Dimension B	129 mm	189 mm	249 mm	309 mm	369 mm	469 mm
Gewicht Peso	Poids Weight	0.27 kg	0.36 kg	0.45 kg	0.54 kg	0.63 kg	0.77 kg

### Lieferumfang:

2 Positionierringe  
4 Schrauben M6x12

### Matériel livré:

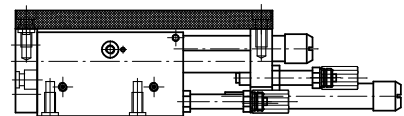
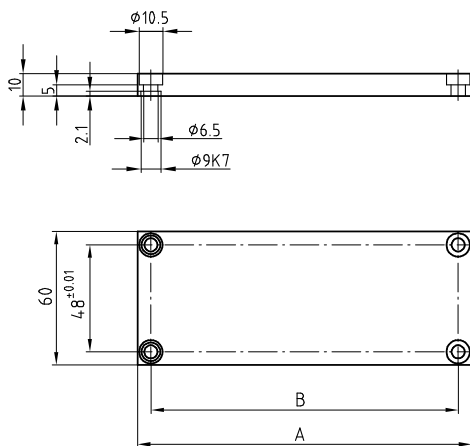
2 Bagues de positionnement  
4 Vis M6x12

### Ambito di fornitura:

2 Anelli di posizionamento  
4 Viti M6x12

### Items supplied:

2 Positioning rings  
4 Screws M6x12



## Zwischenanschlag

## Plaque butée intermédiaire

## Piastra di arresto intermedia

## Intermediate stop

4000037

### Lieferumfang:

1 Stossdämpfer BSM 14  
1 Anschlagsschr. AS 08/40  
2 Schrauben M6x20  
2 Schrauben M5x16  
2 U-Scheiben M5

### Matériel livré:

1 Amortisseur BSM 14  
1 Vis d'arrêt AS 08/40  
2 Vis M6x20  
2 Vis M5x16  
2 Rondelles M5

### Ambito di fornitura:

1 Ammortizzatore BSM 14  
1 Vite d'arresto AS 08/40  
2 Viti M6x20  
2 Viti M5x16  
2 Rosette M5

### Items supplied:

1 Shock absorber BSM 14  
1 Stop screw AS 08/40  
2 Screws M6x20  
2 Screws M5x16  
2 Plain washers M5

